

FSW's 10 Academic & Career Pathways represent broad areas of interest that help you select which FSW degree or certificate will get you on the path to your career.

Guided Pathways

Florida SouthWestern State College

Associate in Arts Degrees (AA)

- Biology
- Business
- Communication
- Criminal Justice
- Economics/Finance
- Elementary Education
- Engineering
- English Language & Literature
- Environmental Science
- Forensic Studies
- History
- Journalism
- Law/Politics
- Management
- Marketing
- Mathematics
- Music
- Nursing
- Pre-Med/Vet
- Psychology
- Social Work
- Software Engineering

Associate in Science Degrees (AS)

- Accounting Technology
- Architectural Design & Construction Technology
- Business Administration & Management
- Business Analytics
- Civil Engineering Technology
- Computer Programming & Analysis
- Crime Scene Technology
- Criminal Justice Technology
- Cybersecurity Operations
- Digital Art & Multimedia Production
- Early Childhood Education
- Emergency Medical Services Technology
- Fire Science Technology
- Health Information Technology
- Music Production & Technology
- Network Systems Technology
- Paralegal Studies
- Science & Engineering Technology
- Social & Human Services

Limited Access Associate Degrees

- Cardiovascular Technology
- Dental Hygiene
- Nursing
- Radiologic Technology
- Respiratory Care

Bachelor's Degrees

- Cardiopulmonary Sciences
- Elementary Education
- Information Systems Technology
- Nursing
- Public Safety Administration
- Supervision & Management

Certificate Programs

- Accounting Technology Management
- Addiction Services
- Audio Technology
- Business Development & Entrepreneurship
- Child Development Specialization
- Computed Tomography (ATC)
- Computer Programmer
- Computer Programming Specialist
- Crime Scene Technician
- Digital Forensics
- Digital Media/Multimedia Production
- Emergency Medical Technician
- Financial Services Management
- Firefighter I/II (PSAV)
- Homeland Security Specialist
- Human Services Generalist
- Inclusion Specialization
- Information Technology Support Specialist
- Medical Information Coder/Biller
- Network Enterprise Administration
- Network Security
- Paramedic
- Preschool Specialization
- Real Estate Paralegal
- Risk Management & Insurance Management
- Scientific Workforce Preparation
- Small Business Management
- Stage Technology
- Youth Development Services



Business



Computing Technologies



Construction, Manufacturing & Industry



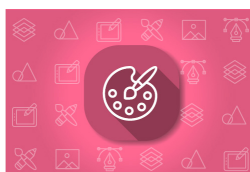
Education (Teaching)



Health Sciences



Humanities, Communication & Global Studies



Performing & Visual Arts



Public Safety & Law Studies



Science, Engineering & Math



Social and Behavioral Sciences & Human Services

YOUR DREAM CAREER BEGINS HERE

CUSTOMIZE YOUR PROGRAM

Don't see your program here?

Our AA degree can be tailored to prepare you for any bachelor's degree program!

DEGREE DESCRIPTIONS

Choosing the right degree program is important! The following definitions can help you determine which degree is right for you.

BS or BAS—Bachelor of Science or Applied Science: A four year degree obtained by completing 120 credit hours. The first 60 hours are comprised of general education classes and the final 60 hours consist of major specific coursework.

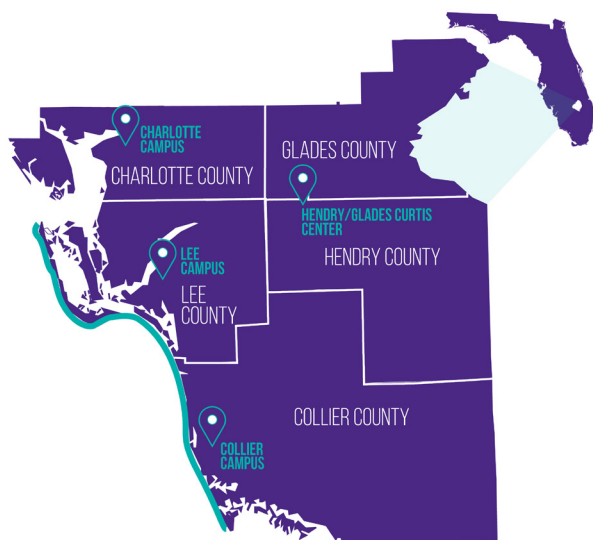
AA—Associate in Arts: An Associate in Arts degree can be tailored so you can transfer into any major in the State University System. Students graduating from FSW with an AA degree are guaranteed by the state of Florida to “have the opportunity to earn a bachelor’s degree at a state university or Florida college offering four-year degrees.” Visit www.fsw.edu/twoplustwo to learn more.

AS—Associate in Science: A two-year program consisting of college level courses to prepare you for entry into employment or specialized bachelor’s degree programs.

CCC—College Credit Certificate: A CCC focuses on a specific job or set of skills. These programs require fewer credits than an associate degree. Credits completed in a CCC may apply to an associates.

ATC—Advanced Technology Certificate: An ATC is available to students who have already been awarded an Associate in Science degree and wish to upgrade their skills.

Limited Access Associate Degree Programs: Health Science degrees listed under Limited Access Associate Degree programs have additional admissions requirements. These degrees prepare students for jobs in high demand health occupations. Please go to www.fsw.edu/programs to learn more.



OUR LOCATIONS

Charlotte Campus
26300 Airport Rd.
Punta Gorda, FL 33950
(941) 637-5629
www.FSW.edu/charlotte

Collier Campus
7505 Grand Lely Dr.
Naples, FL 34113
(239) 732-3700
www.FSW.edu/collier

Hendry/Glades Curtis Center
1092 East Cowboy Way
LaBelle, FL 33935
(863) 674-0408
www.FSW.edu/hendryglades

Thomas Edison (Lee) Campus
8099 College Parkway
Fort Myers, FL 33919
(239) 489-9300
www.FSW.edu/lee

MORE INFORMATION

Admissions, Tours, and Info: www.FSW.edu/admissions

Tuition and Financial Aid: www.FSW.edu/financialaid

FSW Calendar: www.FSW.edu/calendars

Catalog (full program descriptions): www.FSW.edu/academics/catalog

Questions: 1-800-749-2322 or admissions@FSW.edu

Social Media: [@FSWCollege](https://www.instagram.com/FSWCollege)

